

Reawaken...

Available from 2025



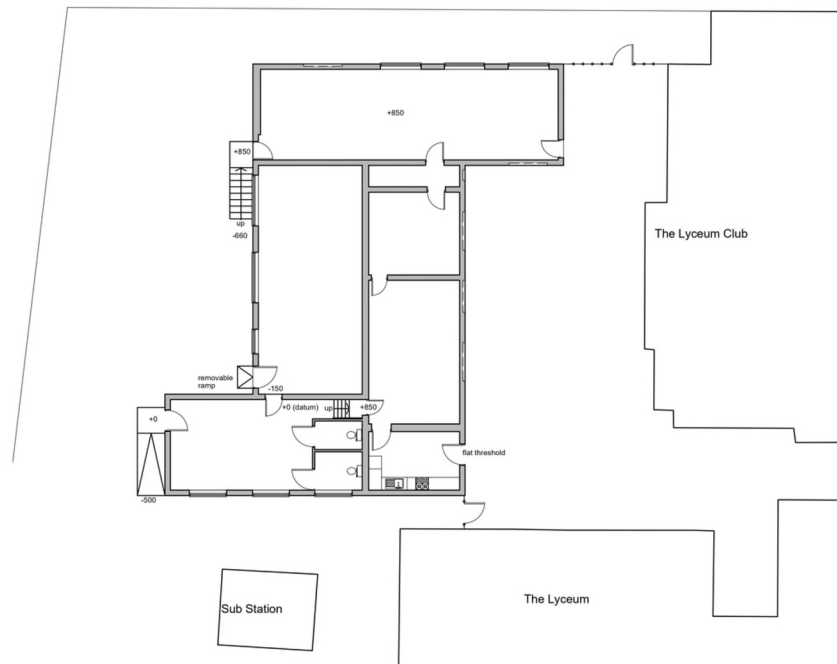
Boys' Brigade Building

Located adjacent to Port Sunlight's iconic Lyceum as part of the original village school, the Boys' Brigade Building has been an important place for the community, most significantly as a home for the Boys' Brigade and the Lyceum Brass Band. It now provides an opportunity for a range of commercial uses.



Boys Brigade's First Parade on Bridge Street
6 May 1900

Floorplan of the Boys' Brigade Building



Total area: c. 2630 sq ft

The opportunity

- Single unit available
- Located next to the Lyceum and overlooks the beautiful Dell park, with some of the village's most exciting venues and spaces on its doorstep
- Electricity and water
- Parking spaces
- Close proximity to Port Sunlight station (Merseyrail) and road links

Get in touch

For any questions or to arrange an informal conversation, email m.ward@portsunlightvillage.com or call 0151 644 4800.