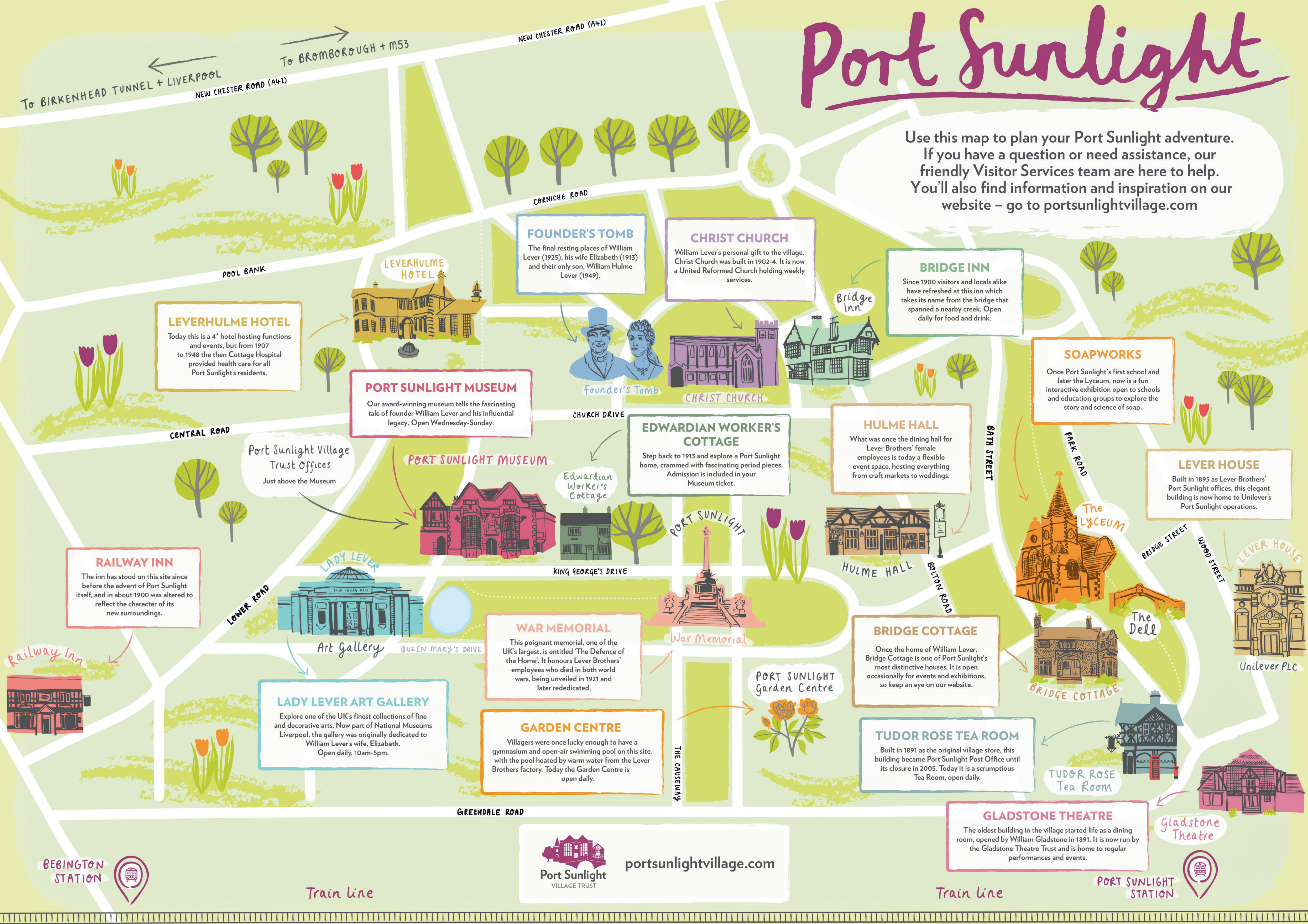


Port Sunlight

Use this map to plan your Port Sunlight adventure.
If you have a question or need assistance, our friendly Visitor Services team are here to help.
You'll also find information and inspiration on our website – go to portsunlightvillage.com



LEVERHULME HOTEL
Today this is a 4* hotel hosting functions and events, but from 1907 to 1948 the then Cottage Hospital provided health care for all Port Sunlight's residents.



FOUNDER'S TOMB
The final resting places of William Lever (1925), his wife Elizabeth (1913) and their only son, William Hulme Lever (1949).



CHRIST CHURCH
William Lever's personal gift to the village, Christ Church was built in 1902-4. It is now a United Reformed Church holding weekly services.



BRIDGE INN
Since 1900 visitors and locals alike have refreshed at this inn which takes its name from the bridge that spanned a nearby creek. Open daily for food and drink.



PORT SUNLIGHT MUSEUM
Our award-winning museum tells the fascinating tale of founder William Lever and his influential legacy. Open Wednesday-Sunday.



EDWARDIAN WORKER'S COTTAGE
Step back to 1913 and explore a Port Sunlight home, crammed with fascinating period pieces. Admission is included in your Museum ticket.

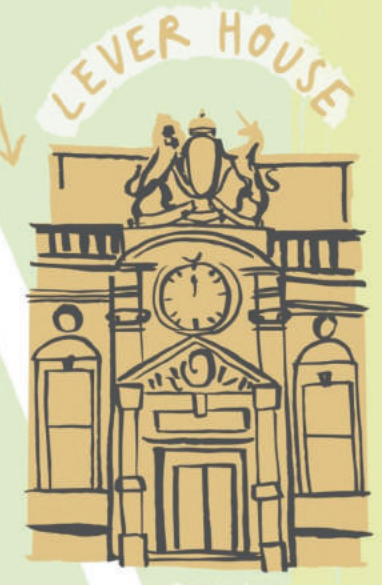


HULME HALL
What was once the dining hall for Lever Brothers' female employees is today a flexible event space, hosting everything from craft markets to weddings.



SOAPWORKS
Once Port Sunlight's first school and later the Lyceum, now is a fun interactive exhibition open to schools and education groups to explore the story and science of soap.

LEVER HOUSE
Built in 1895 as Lever Brothers' Port Sunlight offices, this elegant building is now home to Unilever's Port Sunlight operations.



The Dell



BRIDGE COTTAGE
Once the home of William Lever, Bridge Cottage is one of Port Sunlight's most distinctive houses. It is open occasionally for events and exhibitions, so keep an eye on our website.

TUDOR ROSE TEA ROOM
Built in 1891 as the original village store, this building became Port Sunlight Post Office until its closure in 2005. Today it is a scrumptious Tea Room, open daily.



GLADSTONE THEATRE
The oldest building in the village started life as a dining room, opened by William Gladstone in 1891. It is now run by the Gladstone Theatre Trust and is home to regular performances and events.



WAR MEMORIAL
This poignant memorial, one of the UK's largest, is entitled 'The Defence of the Home'. It honours Lever Brothers' employees who died in both world wars, being unveiled in 1921 and later rededicated.



GARDEN CENTRE
Villagers were once lucky enough to have a gymnasium and open-air swimming pool on this site, with the pool heated by warm water from the Lever Brothers factory. Today the Garden Centre is open daily.




LADY LEVER ART GALLERY
Explore one of the UK's finest collections of fine and decorative arts. Now part of National Museums Liverpool, the gallery was originally dedicated to William Lever's wife, Elizabeth. Open daily, 10am-5pm.



RAILWAY INN
The inn has stood on this site since before the advent of Port Sunlight itself, and in about 1900 was altered to reflect the character of its new surroundings.



Train line



portsunlightvillage.com

Train line

